

Convert GM t56 to Magnum F

1. Remove side cover and undo M8 bolt in center of cam using a block of aluminum to prevent cam rotation, put a rag over your hand and be careful when doing this as the bolt is secured with Loctite and will let go suddenly making it easy to injure yourself on the sharp edges of the shifter.



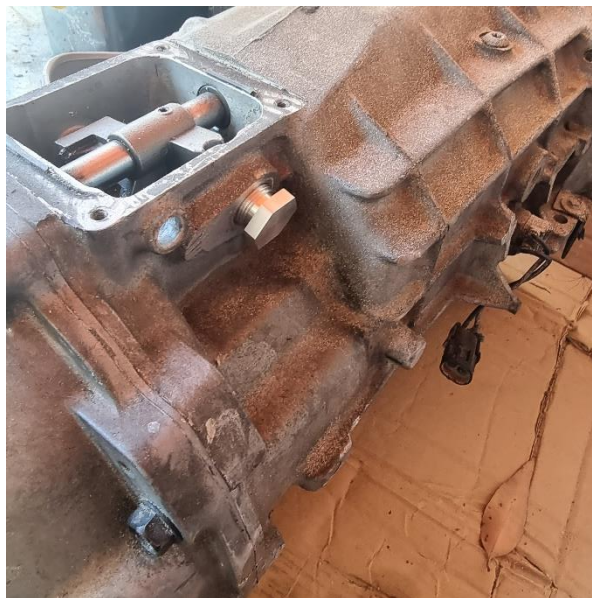
2. Gently pry cam off but working around the perimeter with a flat screwdriver making sure the bearing is not pulled from the case.
3. Fit the new purple cam using the block of aluminum to prevent rotation in the other direction.



4. Refit side cover



5. Replace ball plunger on side of box with supplied bung.



6. Use supplied shaft fitting.



