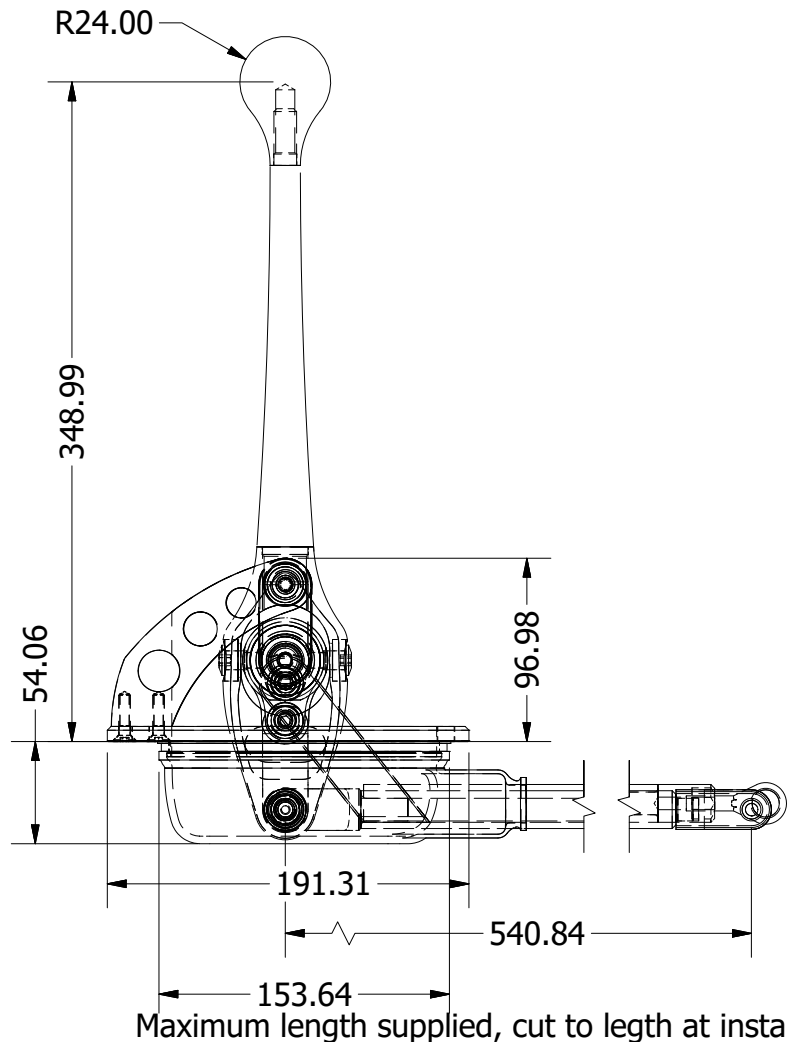
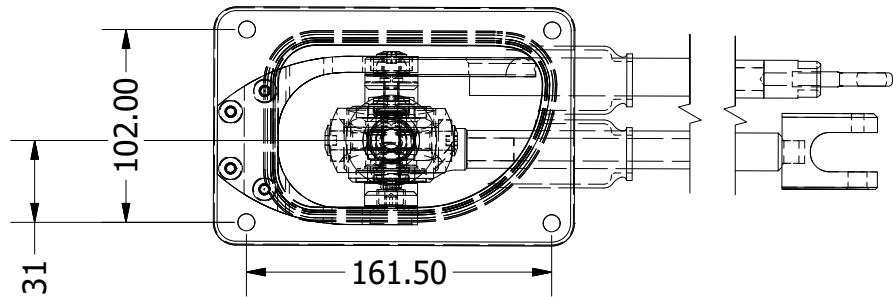
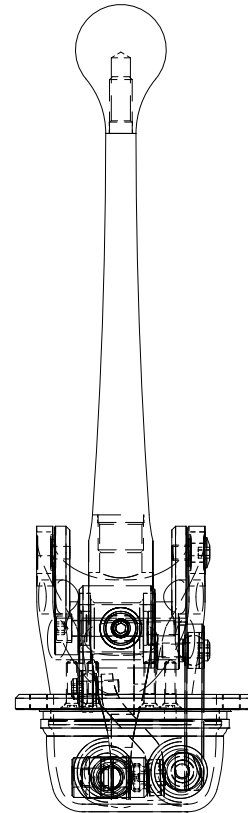


H-Track shifter



Tr6060 High mount remote mount lever kit

- Floating pivot for stationary gear knob under driving loads.
- Angle change multiplier for force feed back rather than position feedback gate selection.
- High mount for minimum hand off wheel time.
- Ball bearings throughout for absolute precision.
- Moulded rubber boot to seal to vehicle floor without covering the shifter mechanism.
- This is our best effort at making the best H-pattern shifter in the world.
- This could be modified to suit many other transmissions



Installation

This is a kit intended for custom builds using the tr-6060 gearbox. This is not a direct fit to any specific car. It is designed to be easily set up with basic tools to suit your needs. There are two aluminium shafts that connect the shifter to the gearbox, one links to the shift rod the other is to link the floating pivot mechanism. These can be cut to length then drilled with 2 roll pins fitted to secure. The minimum length of these rods should be around 120mm.